

girl scouts
of maine

Camp Pondicherry Rental Price Guide

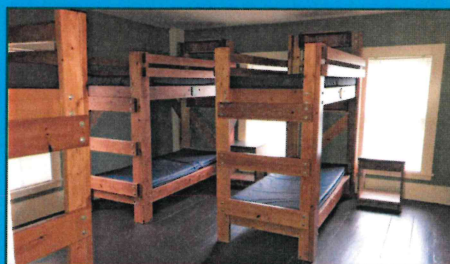
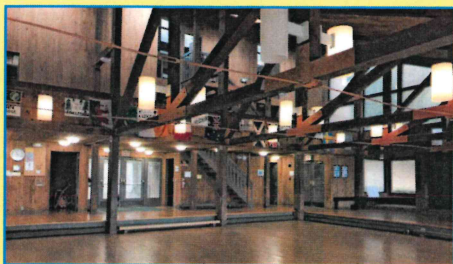


Camp Pondicherry is a beautiful hidden gem nestled in 600+ acres in the foothills of the White Mountains of Maine.

Open year-round (except November), Tent Sites open May-October); limited summer availability due to camp programming. Girl Scouts and other approved non-profit groups can make reservations up to six months in advance of check-out date.

- 2 night minimum for weekends
- Check-in: after 4:00 p.m.
- Check-out: before 3:00 p.m.
- Day use: 8:30 a.m. – 5:30 p.m.
- Call 888-922-4763 to check availability and make a reservation

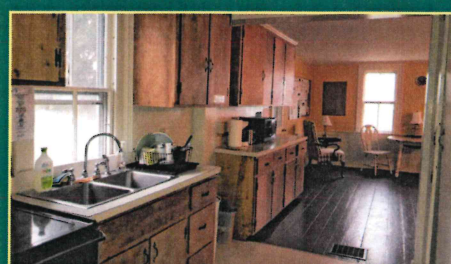
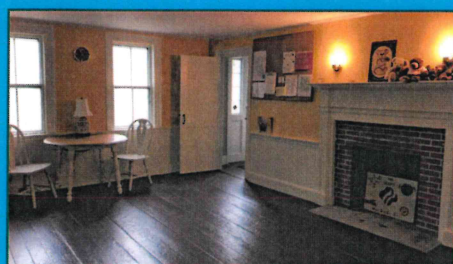
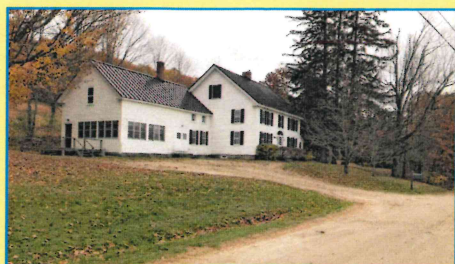
All non-Girl Scout groups contact customer care 1-888-922-4763 for approval, pricing, and more information. More information available online at www.girlscoutsofmaine.org/camprentals.



Complete Camp Rental Options *(exclusions apply; see below for full details)*

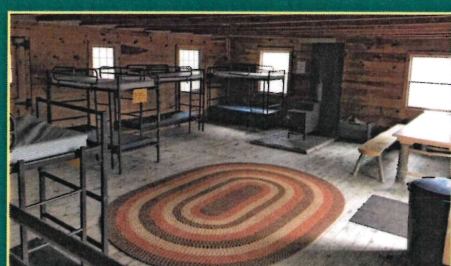
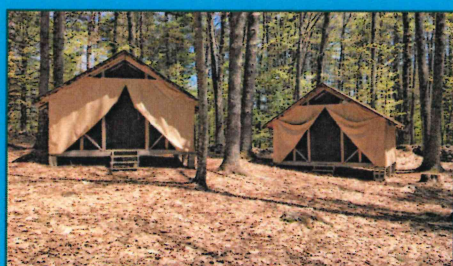
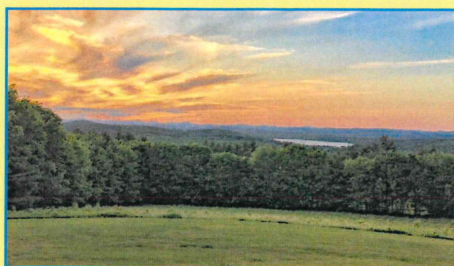
Sites	Description	Sleeping Capacity	Girl Scouts (Daily Fee*)	Non-Profit Groups (Daily Fee*)
Entire Camp with Tent Sites & Chalet	<ul style="list-style-type: none"> Includes use of: <ul style="list-style-type: none"> Chalet and kitchen All Tent and Cabin Sites Farmhouse Sports Fields and Trails Exclusive use; no rentals to other groups. Program areas and equipment rentals are available as add-ons for additional fees. 	241	\$650	\$1,500
Entire Camp with Tent Sites (without the Chalet)	Everything above included with exception of the Chalet.	203	\$550	\$1,100
Entire Camp with Chalet (without Tent Sites)	Only available November-April. Includes use of: Wentworth, Farmhouse, and Chalet.	69	\$450	\$1,100
Chalet	Available year-round. Large heated building with H/C water, electricity, toilets, showers, fireplace, kitchen with 6-burner gas stove, refrigeration, and small chest freezer. 2 floors of bunk lofts with bunkbeds, 2 small bedrooms. Day use: \$200	38 (32 bunks plus 2 small rooms w/ 3 beds each)(16 bunks in each room)	\$250	\$650
Farmhouse	Available year-round. Heated building with H/C water, electricity, toilets, shower, kitchen, and refrigerator. 3 bedrooms with bunkbeds and 2 bathrooms. Day use: \$75/\$150.	17	\$150	\$300
Wentworth Lodge	Available year-round. Building with woodstove for heat and cooking, bunkbeds with mattresses, and electricity. Nov-May: Running water and outhouse nearby. May-Oct: Flush toilets also nearby.	14	\$85	\$150
Ledges (Tents site)	7 platform tents with permanent roofs, built-in beds (4 in each tent), picnic shelter with tables, water, portable toilet, and flush toilets nearby.	28 (tent site)	\$80	\$125
Wolf Tree (Tents site)	7 platform tents with permanent roofs, built-in beds (4 in each tent), picnic shelter with tables, water, portable toilet, and flush toilets nearby.	28 (tent site)	\$80	\$125
Bramble Patch (Tents site)	7 platform tents with permanent roofs, built-in beds (4 in each tent), picnic shelter with tables, water, portable toilet, and flush toilets nearby.	28 (tent site)	\$80	\$125

****Daily fee based on overnight rentals. Day rentals listed in description where applicable.***



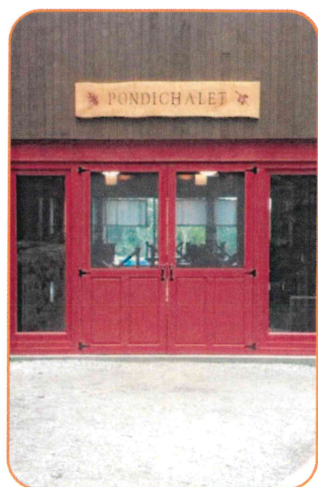
Sites	Description	Sleeping Capacity	Girl Scouts (Daily Fee*)	Non-Profit Groups (Daily Fee*)
Deep Woods (Tents site)	7 platform tents with permanent roofs, built-in beds (4 in each tent), picnic shelter with tables, water, portable toilet, and flush toilets nearby.	28 (tent site)	\$80	\$125
Tall Pines with Tents Only	2 platform tents with permanent roofs, built-in beds (4 in each tent), picnic shelter with tables, water, portable toilet, and flush toilets nearby. Picnic area is shared space for both cabins in this unit. Shelter is shared.	8 in tents	\$45	\$70
Tall Pines Cabin #1 Jack Pine	Cabin with built-in bunkbeds, picnic shelter with tables, water, portable toilet, and flush toilets nearby. Divided sleeping area for 2 adults. Lights, ceiling fans, and outlets. No water in cabin. Shelter is shared.	15 in cabin	\$80	\$125
Tall Pines Cabin #2 Scotts Pine	Cabin with built-in bunkbeds, picnic shelter with tables, water, portable toilet, and flush toilets nearby. Divided sleeping area for 2 adults. Lights, ceiling fans, and outlets. No water in cabin. Shelter is shared.	15 in cabin	\$80	\$125
Barn	Seating or program area and stage. Council must approve. Day Use Only.	N/A	\$75	\$125
Shared Amenities (Avaliable with all rentals. Exclusive use with Entire Camp Rental)				
Sports Field	Large, flat, grassy play area. No equipment included.			
Trails	Permission from Site Manager. Use Trail Map.			
Waterfront Grassy Area	May-October. Use of the area only, no swimming or boating.			
Blueberry Hill	Seating area around campfire. Requires TCT.			
Camp Pondicherry - Field Trips				
Nature Based Educational Field Trips (10:00 a.m.-1:00 p.m.)	Field Trips include five(5) 30-minute activities focused on outdoor skills and one(1) 30-minute brown bag lunch (provided by student/school). Groups of all sizes can be accommodated (20 student minimum). If the minimum number is not met, groups may join an already scheduled field trip or pay for a minimum of 20 people.		\$15 pp	\$15 pp (\$12 pp for Title 1 Schools)

**Daily fee based on overnight rentals. Day rentals listed in description where applicable.*



Equipment Rentals *(Available 8:30 a.m.-5:30 p.m. Daily, May-October. Exceptions noted below.)*

Rental	Description	Girl Scouts (Daily Fee)	Non-Profit Groups (Daily Fee)
Swimming	Must provide your own lifeguard and proof of ARC lifeguard certification or equivalent.	\$45	\$60
Boating	Must provide your own boating instructor with proof ARC SCS certification or equivalent. Includes Canoes/Kayaks.	\$50	\$100
Archery Range	Must provide your own archery instructor with proof of Level 1 Archery certification.	\$60	\$100
Hatchet Range	Must provide a GSME trained hatchet instructor and proof of GSME Hatchet certification.	\$30	\$75
Archery and Hatchet Combo	Combo only available for GSME Archery Certified Instructors. Must provide a GSME Archery/Hatchet trained instructor and proof of GSME certification.	\$75	NA
Snowshoes	To be used on Camp Pondicherry property only, including fields and trails. Winter only.	\$45	\$150
Carolyn Lee Challenge Course Low Ropes	7 low ropes elements. Must provide your own low ropes course certified instructor and proof of certification.	\$50	\$125
Carolyn Lee Challenge Course High Ropes	4 high ropes elements. Must coordinate with council to hire GSME Instructors. (1-4 instructors needed based on size of group). 20 person minimum. Available 9:00 p.m.-12:00 p.m. and 1:00-5:00 p.m.	20 person minimum. \$20 per person.	



Refunds

Girl Scout Groups	Other Approved Groups
4 weeks notice: Refund, minus a 10% fee with at least 4 weeks' notice	8 or more weeks notice: Refund, minus a 10% fee with at least 8 weeks' notice
3 weeks notice: 75% refund of total fee	Less than 8 weeks: No refund - full balance due
2 weeks notice: 50% refund of total fee	
Less than 2 weeks: No refund	

Facilities and Equipment Not Available for Rental: Troop house, health center, bikes and paddleboards.



Camp Kirkwold Rental Price Guide



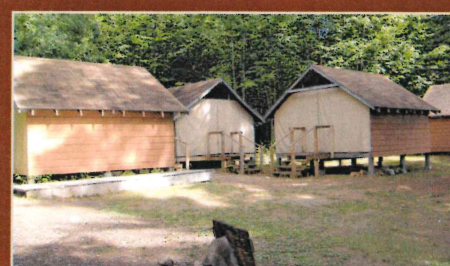
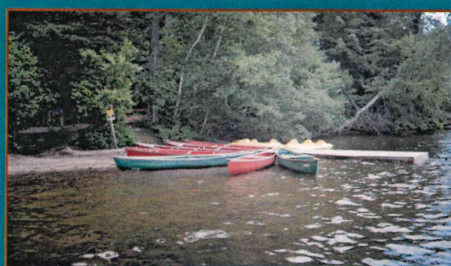
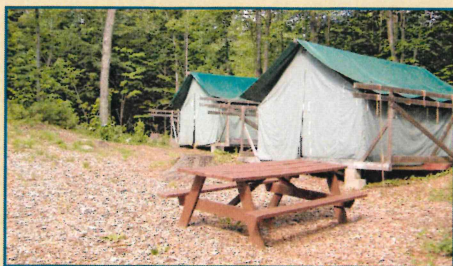
Camp Kirkwold is a 100-acre nature oasis with woods, wetlands, and streams. Located on Lovejoy Pond, just 15 minutes away from Augusta. Open late May to early October; limited availability due to camp programming.

- 2 night minimum for weekends
- Check-in: after 4:00 p.m.
- Check-out: before 3:00 p.m.
- Day use: 8:30 a.m. – 5:30 p.m.
- Call 888-922-4763 to check availability and make a reservation

Groups needing a reservation more than six months out and all non-Girl Scout groups contact customer care 1-888-922-4763 for approval, pricing, and more information.

girl scouts
of maine

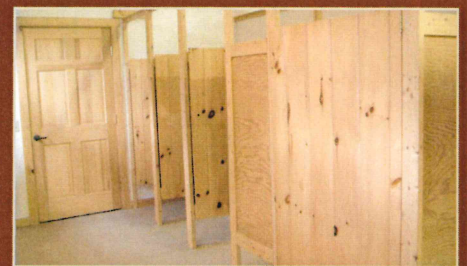
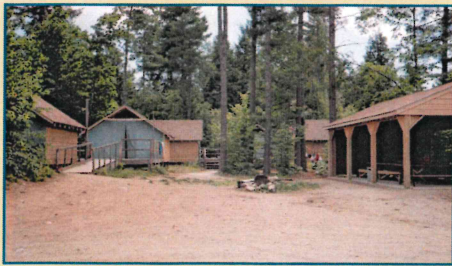




Camp Rental Options *(exclusions apply; see below for full details)*

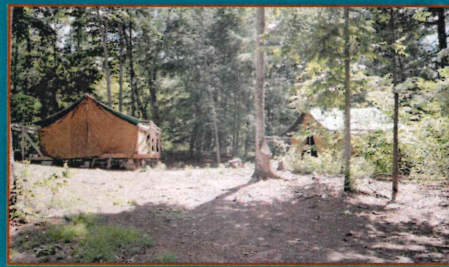
Sites	Description	Sleeping Capacity	Girl Scouts (Daily Fee*)	Non-Profit Groups (Daily Fee*)
Entire Camp with Kitchen	<ul style="list-style-type: none"> Includes use of: <ul style="list-style-type: none"> All tent sites Shower houses Arts and Leadership and Library Buildings Screened-in shelter Excludes Cook's Cabin Program areas and equipment rentals are available as add-ons for additional fees. 	92	\$325	\$550
Entire Camp without Kitchen		92	\$245	\$475
Art Building	Use only with Entire Camp Rental. Seating capacity 10.	N/A	N/A	N/A
Library Building	Use only with Entire Camp Rental. Seating capacity 10.	N/A	N/A	N/A
Lodge*	Lodge Dining hall with large room for gathering and H/C water, no flush toilets, outhouse nearby. Seating capacity 95. Shared space with other groups unless renting Entire Camp. Lodge is available for exclusive daily rental separately, approval from council is needed.	0	\$75	\$125
Kitchen	Kitchen has a 6-burner gas stove and refrigeration. Available for day use as an add-on to other rentals. Use of kitchen is only included with Entire Camp with Kitchen Rental.	0	\$75	\$125
Loon's Loft (Tent Site)	3 platform tents with 4 beds and mattresses in each tent, fire circle, picnic tables, outhouse. Shared use of Lodge/No Kitchen, Shower house and Screened in Shelter.	12	\$60	\$90
Bubbling Brook (Tent Site)	3 platform tents with 4 beds and mattresses in each tent, fire circle, picnic tables, outhouse. Shared use of Lodge/No Kitchen, Shower house and Screened in Shelter.	12	\$60	\$90
Hill Side (Tent Site)	2 platform tents with 4 beds and mattresses in each tent, fire circle, picnic tables, outhouse. Shared use of Lodge/No Kitchen, Shower house and Screened in Shelter.	8	\$40	\$60

**Daily fee based on overnight rentals. Day rentals listed in description where applicable.*



Sites	Description	Sleeping Capacity	Girl Scouts (Daily Fee*)	Non-Profit Groups (Daily Fee*)
Birches Unit	6 sleeping shelters with 5 bunks in each, picnic shelter, picnic tables, flush toilets nearby. Shared use of Lodge/No Kitchen and Shower House.	30	\$90	\$140
Pine Point Unit	6 sleeping shelters with 5 bunks in each, picnic shelter, picnic tables, flush toilets nearby. Shared use of Lodge/No Kitchen and Shower House.	30	\$90	\$140
Shared Amenities <i>(Avaliable with all rentals. Exclusive use with Entire Camp Rental)</i>				
Shower House	Toilets, sinks, showers.			
Sports Field	Large, flat, grassy play area.			
Trails	Permission from Camp Director or Site Manager. Use Trail Map.			
Equipment Rentals <i>(Available 8:30 a.m.-5:30 p.m.)</i>				
Swimming	Must provide your own lifeguard and proof of ARC lifeguard certification or equivalent.	N/A	\$45	\$60
Boating	Must provide your own boating instructor with proof ARC SCS certification or equivalent. Includes Canoes/Kayaks.	N/A	\$60	\$100
Archery Range	Must provide your own archery instructor with proof of Level 1 Archery certification.	N/A	\$60	\$100
Hatchet Range	Must provide a GSME trained hatchet instructor and proof of GSME Hatchet certification.	N/A	\$30	\$75
Archery and Hatchet Combo	Combo only available for GSME Archery Certified Instructors. Must provide a GSME Archery/Hatchet trained instructor and proof of GSME certification.	N/A	\$60	\$100

**Daily fee based on overnight rentals. Day rentals listed in description where applicable.*



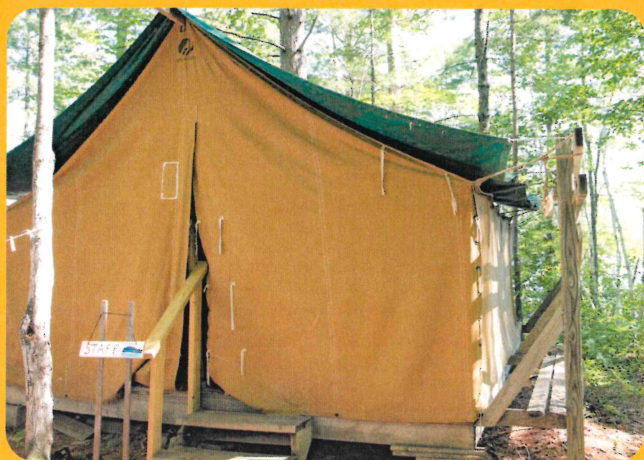
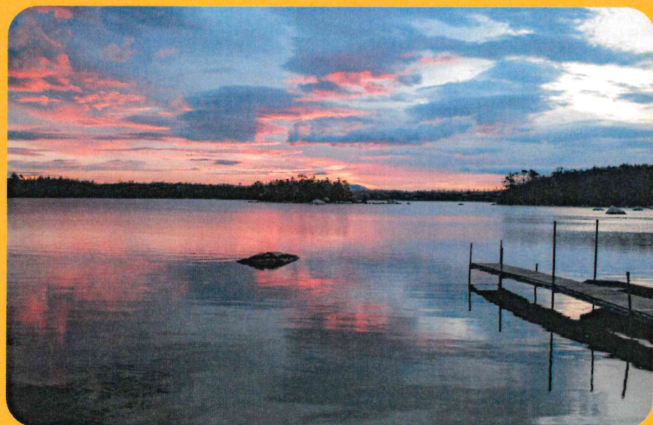
Refunds

Girl Scout Groups	Other Approved Groups
4 weeks notice: Refund, minus a 10% fee with at least 4 weeks' notice	8 or more weeks notice: Refund, minus a 10% fee with at least 8 weeks' notice
3 weeks notice: 75% refund of total fee	Less than 8 weeks: No refund - full balance due
2 weeks notice: 50% refund of total fee	
Less than 2 weeks: No refund	

Facilities and Equipment Not Available for Rental: Cabins and Storage Buildings.



Camp Natarswi Rental Price Guide

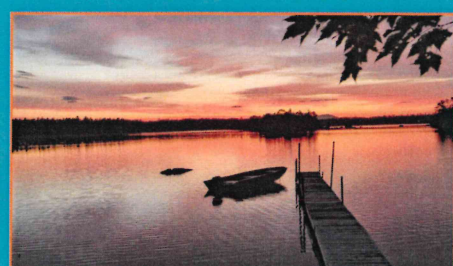
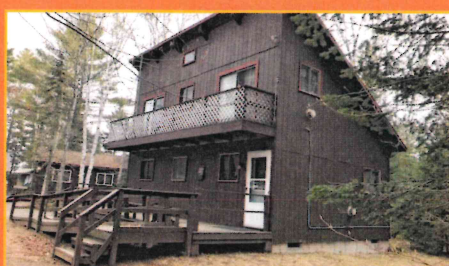
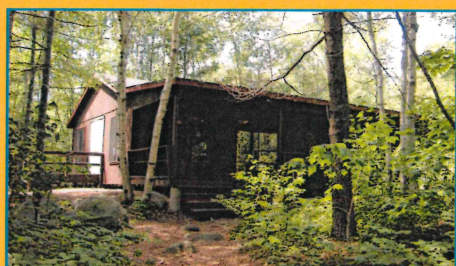


Camp Natarswi is a wilderness paradise offering 40 acres adjacent to Baxter State Park with a pristine lake where beautiful views of Mt. Katahdin can be enjoyed.

Open late May to early October; limited availability due to camp programming. Girl Scouts and other approved non-profit groups can make reservations up to six months in advance of check-out date.

- 2 night minimum for weekends
- Check-in: after 4:00 p.m.
- Check-out: before 3:00 p.m.
- Day use: 8:30 a.m. – 5:30 p.m.
- Call 888-922-4763 to check availability and make a reservation

Groups needing a reservation more than six months out and all non-Girl Scout groups contact customer care 1-888-922-4763 for approval, pricing, and more information.



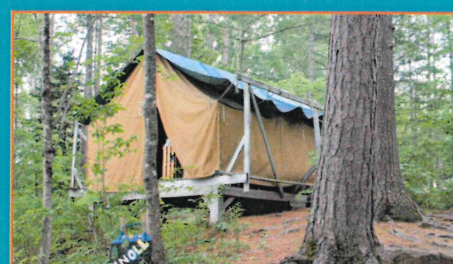
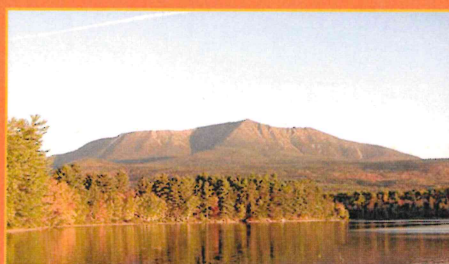
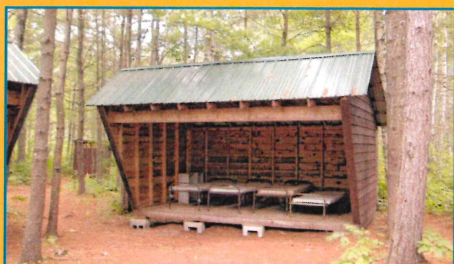
Complete Camp Rental Options *(exclusions apply; see below for full details)*

Sites	Description	Sleeping Capacity	Girl Scouts (Daily Fee*)	Non-Profit Groups (Daily Fee*)
Entire Camp without kitchen	<ul style="list-style-type: none"> Includes use of: <ul style="list-style-type: none"> All tent and cabin sites Shower houses Birches and Katahdin Buildings Dining Hall 	150-171	\$420	\$850
Entire Camp with kitchen	<ul style="list-style-type: none"> Excludes Cook's Cabin and Health Center (available as add-ons) Program areas and equipment rentals are available as add-ons for additional fees. Dining hall seating capacity: 150 	150-171	\$550	\$1,050

Camp and Tent Site Rentals *(Includes shared use of Dining Hall. No Kitchen use. Program areas and equipment rentals are available as add-ons for additional fees.)*

Wanderer (Adirondack Site)	4 Adirondack shelters that sleep 4 each (no beds), no electricity, picnic tables. Outhouse and water nearby.	16	\$60	\$80
Pamola (Cabin Site)	3 cabins with 10 beds each, electricity, picnic table; outhouse and water nearby. 1 tent with 4 beds. Shared use of Bath House.	34	\$100	\$150
Ridge (Tent Unit)	6 platform tents with 4 beds in each tent, picnic table, water and flush toilets nearby.	24	\$80	\$125
Katahdin (Tent Unit)	6 platform tents with 4 beds in each tent, picnic table, water and outhouse or flush toilets nearby.	24	\$80	\$125
Knoll (Tent Unit)	5 platform tents and 1 cabin with 4 beds in each tent, picnic table, water and outhouse or flush toilets nearby.	24	\$80	\$125
Pioneer (Tent Site w/ Shelter Unit)	6 platform tents with 4 beds in each tent, picnic table, water and outhouse or flush toilets nearby. Picnic shelter with fireplace and picnic tables.	24	\$90	\$130
Singing Pines (Tent Unit)	4 platform tents with 4 beds in each tent, picnic table, water and outhouse or flush toilets nearby.	16	\$60	\$90

**Daily fee based on overnight rentals. Day rentals listed in description where applicable.*



Additional Sites Available as Add-ons *(Not available for solo rental.)*

Sites	Description	Sleeping Capacity	Girl Scouts (Daily Fee*)	Non-Profit Groups (Daily Fee*)
Lakeside (Tent Unit)	2 platform tents with 4 beds and mattresses in each tent, picnic table, water and flush toilets nearby.	8	\$45	\$70
Main Camp Tents	2 platform tents with 3 beds and mattresses in each tent, picnic table, water and flush toilets nearby.	6	\$45	\$70

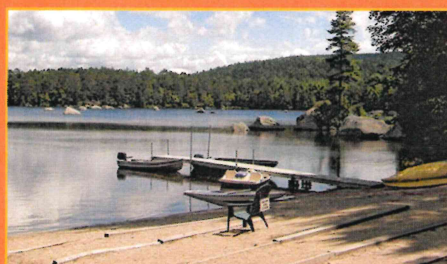
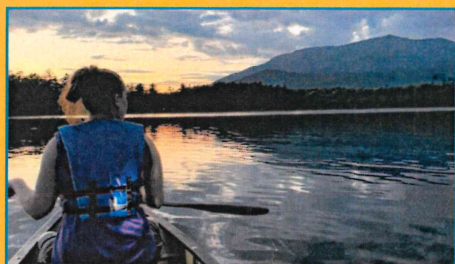
Additional Facility Add-ons

Abnaki Dining Hall with Kitchen	Large hall with full kitchen, electricity, H/C water, flush toilet nearby. Dining hall seating capacity: 150. Day use: \$75/\$125.	N/A	\$175	\$225
Birches Arts Building	Large open space with electricity, cold water, tables, large porch, flush toilets nearby. Seating capacity: 20-24. Day use only: \$35/\$70.	N/A	N/A	N/A
Katahdin Nature Building	Open room with tables, electricity, no water, flush toilets nearby. Seating capacity: 15-20. Day use only: \$35/\$70.	N/A	N/A	N/A
Cooks Cabin	Small cabin with 3 beds, electricity, flush toilets nearby; propane heat. Not a solo rental.	3	\$35	\$65
Health Center	Only 2nd floor available, 4 bedrooms, 2 bathrooms, water, electricity. Not a solo rental and must be approved by council.	8	\$80	\$160

Shared Amenities *(Available with all rentals. Exclusive use with Entire Camp Rental)*

Mountain Shower House	7 toilets, 5 sinks, 9 showers.
Champion Shower House	7 toilets, 7 sinks, 11 showers.
Outside Games and Area and Camp Lawn Area	Large, flat, grassy play area.
Trails	Permission needed from Camp Director or Site Manager. Use Trail Map.
Cathedral Fire Ring Area	Fire ring with seating.
Main Camp Fire Ring Area	Fire ring with seating.

***Daily fee based on overnight rentals. Day rentals listed in description where applicable.**



Equipment and Program Area Rentals/Add-ons *(Available 8:30 a.m.-5:30 p.m. Daily with the exception of Rock Climbing.)*

Rental	Description	Girl Scouts (Daily Fee)	Non-Profit Groups (Daily Fee)
Swimming	Must provide your own lifeguard and proof of ARC lifeguard certification or equivalent.	\$45	\$60
Boating	Must provide your own boating instructor with proof ARC SCS certification or equivalent. Includes Canoes/Kayaks.	\$50	\$100
Archery includes Hatchet for GSME Archery Certified Instructors.	Combo only available for GSME Archery Certified Instructors. Must provide a GSME Archery/Hatchet trained instructor and proof of GSME certification.	\$75	NA
Hatchet Range	Must provide a GSME trained hatchet instructor and proof of GSME Hatchet certification.	\$30	\$75
Archery	Must provide your own archery instructor with proof of Level 1 Archery certification.	\$60	\$100
Fishing Equipment	Use of Fly Fishing or Rod Fishing Poles. Requires Fishing License. Bait not provided.	\$5	\$40
Boulder Course Low Ropes	Must provide your own low ropes course certified instructor and proof of certification.	\$50	\$125
Rock Climbing	Must coordinate with council to hire GSME Instructors. (1-4 instructors needed bases on size of group). 20 person minimum. Available 9:00 p.m.-12:00 p.m. and 1:00-5:00 p.m.	\$20.00 pp	



Refunds

Girl Scout Groups	Other Approved Groups
4 weeks notice: Refund, minus a 10% fee with at least 4 weeks' notice	8 or more weeks notice: Refund, minus a 10% fee with at least 8 weeks' notice
3 weeks notice: 75% refund of total fee	Less than 8 weeks: No refund - full balance due
2 weeks notice: 50% refund of total fee	
Less than 2 weeks: No refund	

Facilities and Equipment Not Available for Rental: Director Cabin, Holmes Hut, Staff Cabin, and Lower Level Health Center. Sailing and Paddleboards.